



May 2001

Topic: CAD/CAM System Sales - Reseller Views

CAD Market
Statistics

Operating systems, hardware platforms, top ten CAD software brands and CAD seat numbers in the Architecture Sector

Business Advantage has analysed data from its CAD/CAM User Site database on the Architectural sector over a three-year period. The years analysed are 1997, 1998 and 2000 and are based on a minimum of 180 interviews in each of the three years.

*iCAD is produced
by Business
Advantage, a B2B
research, business
development and
marketing
consulting practice
operating in the
global IT, Digital and
Telecommunication
s sectors.*

The data relates to Operating Systems, CAD software (top 10 brands), number of CAD seats, Hardware and PC brands.

Operating Systems

In 1997, Windows 95 was the leading Operating System in the sector used by almost half of the sites sampled. Windows 3.1x and DOS were used by a quarter of the sites, while the Apple MAC was present in one in four sites. Windows NT (12%) and UNIX (4%) were also used by Architectural sites in 1997.

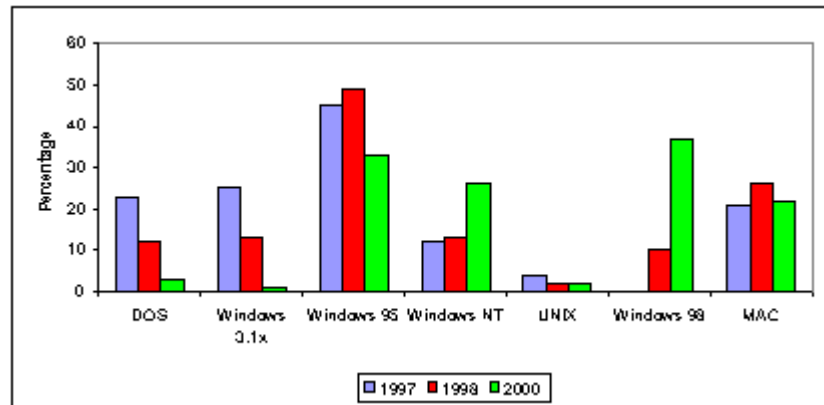
In 1998 there was a decline in the use of DOS and Windows 3.1 among Architectural sites. Use of Windows 95 and Windows NT remained practically the same. A quarter of sites were using the Apple MAC as their OS. Ten percent of sites had installed Windows 98 shortly after its launch that same year.

In 2000, as would be expected; DOS and Windows 3.1 almost disappeared as the Operating System in the Architectural sector. Despite a decline in use over 1998, Windows 95 was still used by a third of sites in 2000. Windows 98 was by then installed in over a third of sites, while the Apple MAC remained used by almost a quarter of sites. Use of Windows NT doubled from the 1998 figures and in 2000 was installed in a quarter of sites.



May 2001

The chart below shows the Operating Systems used during 1997, 1998 and 2000 by the Architectural sector.



Software Brand

AutoCAD is the leading software brand used in the Architectural sector with over half of sites using this product in 1997 and 2000. AutoCAD LT is also commonly used in the sector with over 40% of sites using it in 2000.

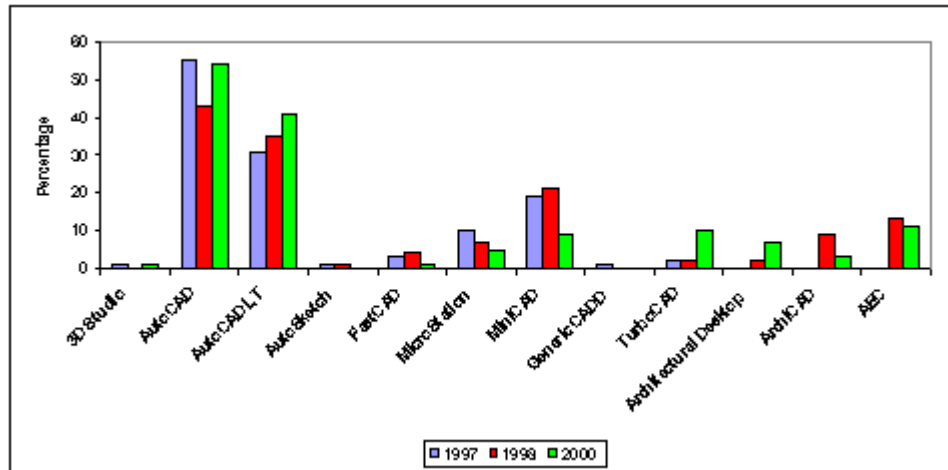
One in five sites used MiniCAD in 1997 and 1998; however, usage of this software declined in 2000 and was used by one in ten sites.

Other leading software brands used in the Architectural sector include the AutoCAD add on AEC, MicroStation, TurboCAD, ArchiCAD, FastCAD, 3D Studio and Architectural Desktop. Of course, some architectural practices use other software packages in addition to those used exclusively for architectural design.

The chart below shows the top brands used in the Architectural sector in 1997, 1998 and 2000.



May 2001

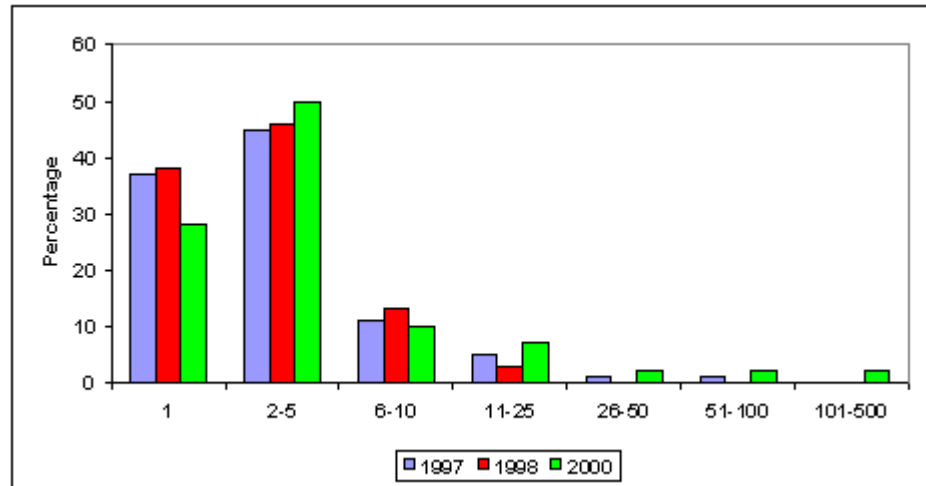


Number of CAD Seats

The most common number of CAD seats per site in the Architectural sector is two to five. In 1997, 45% of sites fell under this band, growing to 46% in 1998, and 50% in 2000.

Sites with only one CAD seat are also common accounting for a third of Architectural sites. One in ten sites in the sector have from six to ten CAD seats. In 2000, 7% of Architectural sites had from 11 to 25 seats.

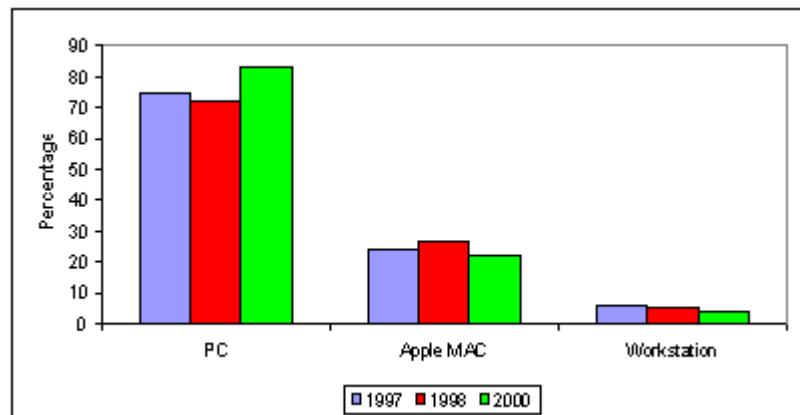
The chart below illustrates the number of CAD seats used in the Architectural sector over 1997, 1998 and 2000.



Hardware Platform

PCs dominate the Architectural sector as hardware platforms. In 1997, 75% of sites used PCs as their main platform increasing to 83% in 2000. Apple MACs are also a common hardware platform in the sector installed in a quarter of sites. Workstations are installed in only 5% of sites.

The chart below shows the hardware platforms used during the three years analysed.





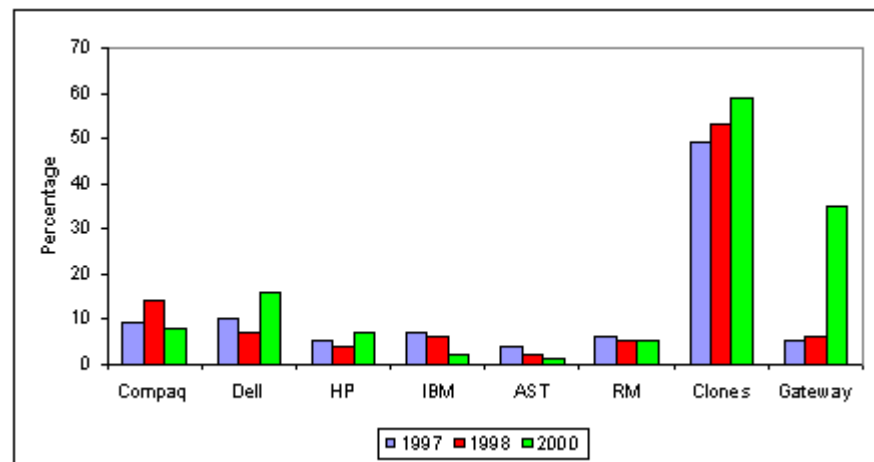
May 2001

PC Brands

Of the leading brands, Gateway has gained considerable market penetration since 1997, and in 2000 was used by over a third of Architectural sites. Other leading PC brands in the sector are Dell, Compaq and HP.

However, overall, non-leading brands, referred to here as "clones", have, since 1997 been used in over half of all sites.

The chart below looks at the leading PC brands used in the Architectural sector in 1997, 1998 and 2000.



Further Information

The data presented above comes from research amongst the UK CAD/CAM user community. If you would like to find out more about this database and the services that surround it, please go to the following links:

[Database of 20,000 UK CAD/CAM User sites](#)

[Request Five Free Samples](#)

[Research in the CAD Sector](#)

Please [Click HERE](#) to leave a comment or question.



Pel House, 35 Station Square, Petts Wood, Kent, BR5 1LZ, United Kingdom

Tel: +44 (0)1689 873636 Email: info@business-advantage.com Web: www.business-advantage.com